

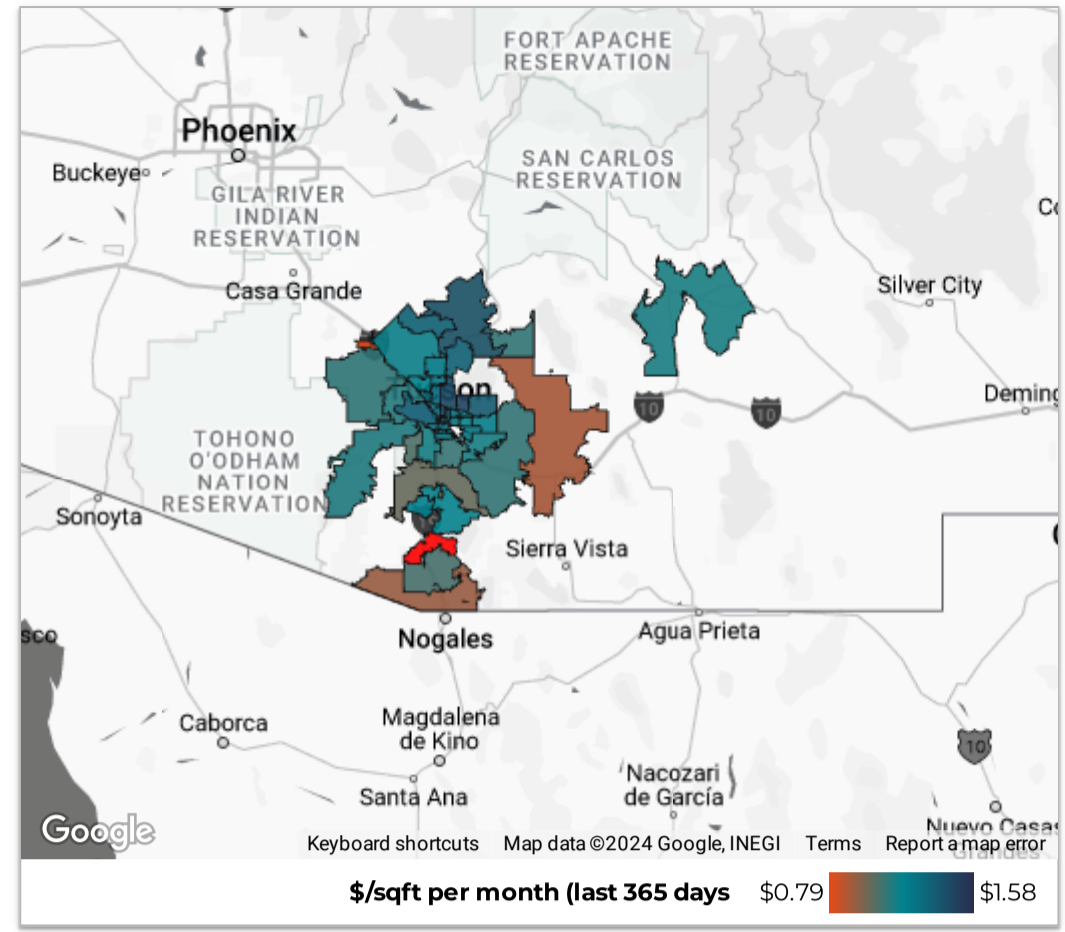
Southern AZ Rental Housing Market

All data is updated in realtime in accordance with content from MLSSAZ. This report provides a snapshot of the market as taken on: Aug 5, 2024

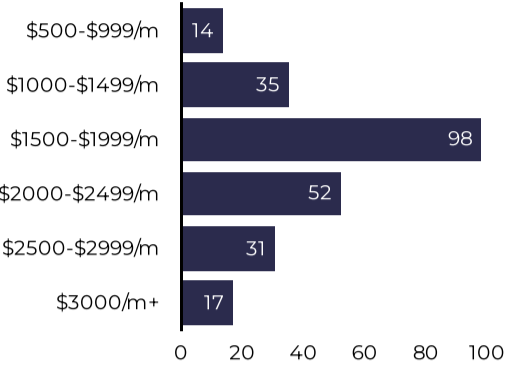
Region City Zip Code

County Type Beds

Price Range Between and



July



of Leases
247
 ↑ 2.9% from previous year

Median Lease (\$/month)
\$1,895
 ↑ 4.1% from previous year

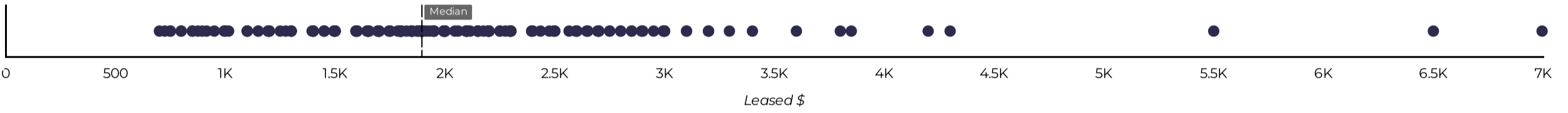
Total Monthly Rental Volume
\$499,118
 ↑ 8.1% from previous year

Median Days on Market
22
 ↓ -3 from previous year

\$/sqft
\$1.30
 ↑ \$0.04 from previous year

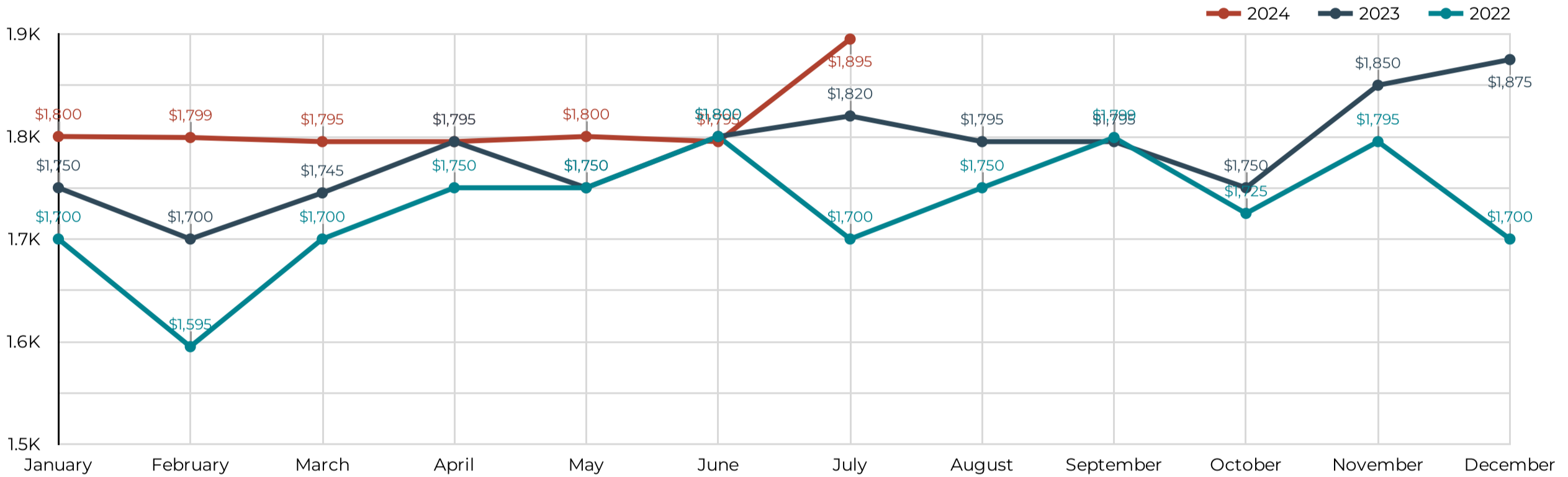
Average % Over Asking
-0.09%
 ↑ 0.37% from previous year

Leases



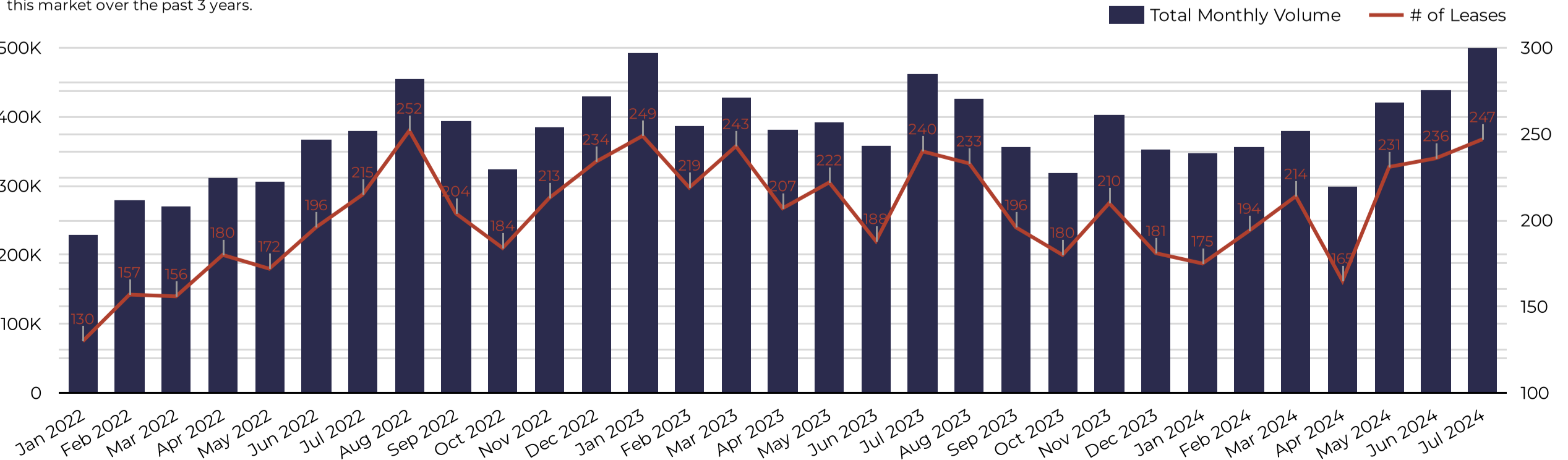
Median Rental Price/Month

Use this data to see how the cost of real estate has changed in this area over the last 3 years.



Market Activity

Use this data to see changes in total lease activity in this market over the past 3 years.



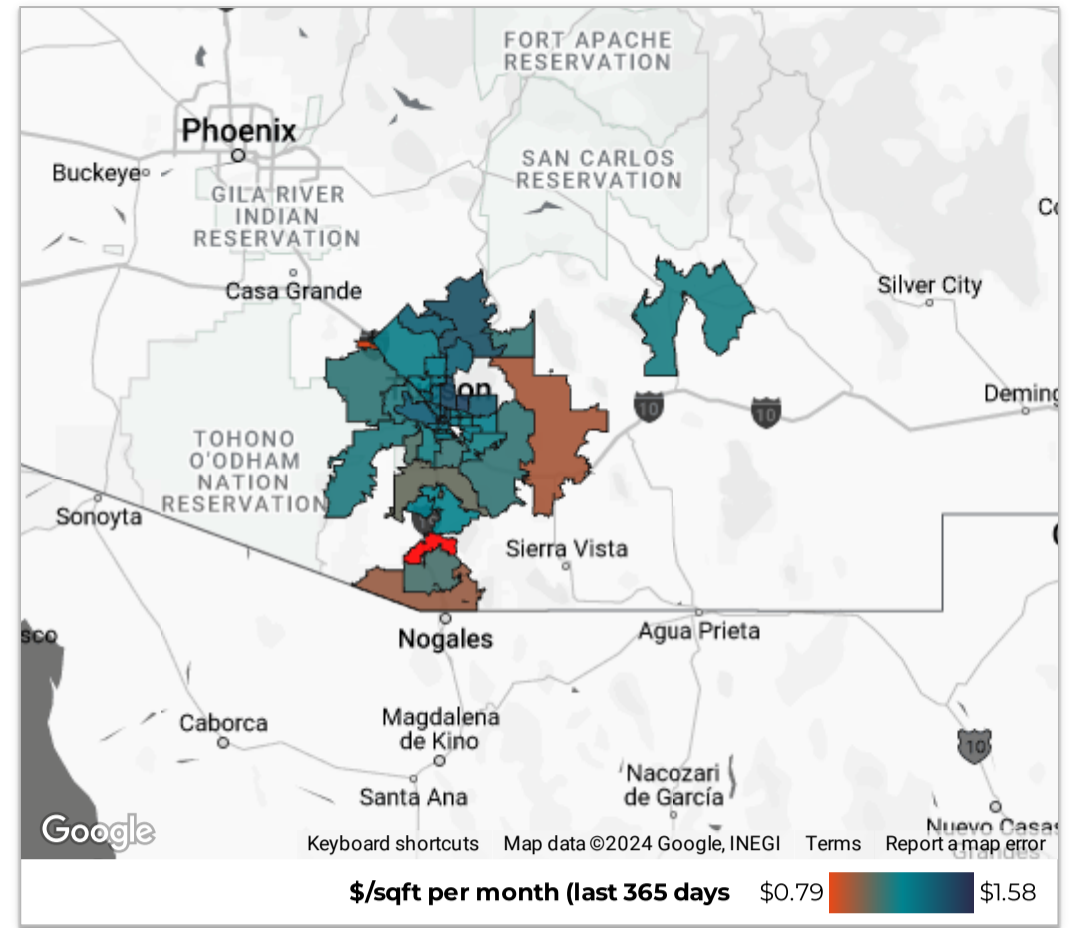
Southern AZ Rental Housing Market

All data is updated in realtime in accordance with content from MLSSAZ. This report provides a snapshot of the market as taken on: Aug 5, 2024

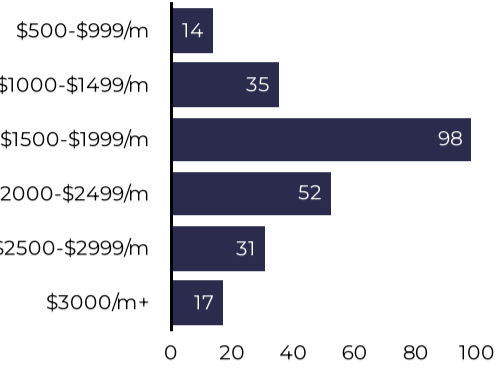
Region City Zip Code

County Type Beds

Price Range Between and



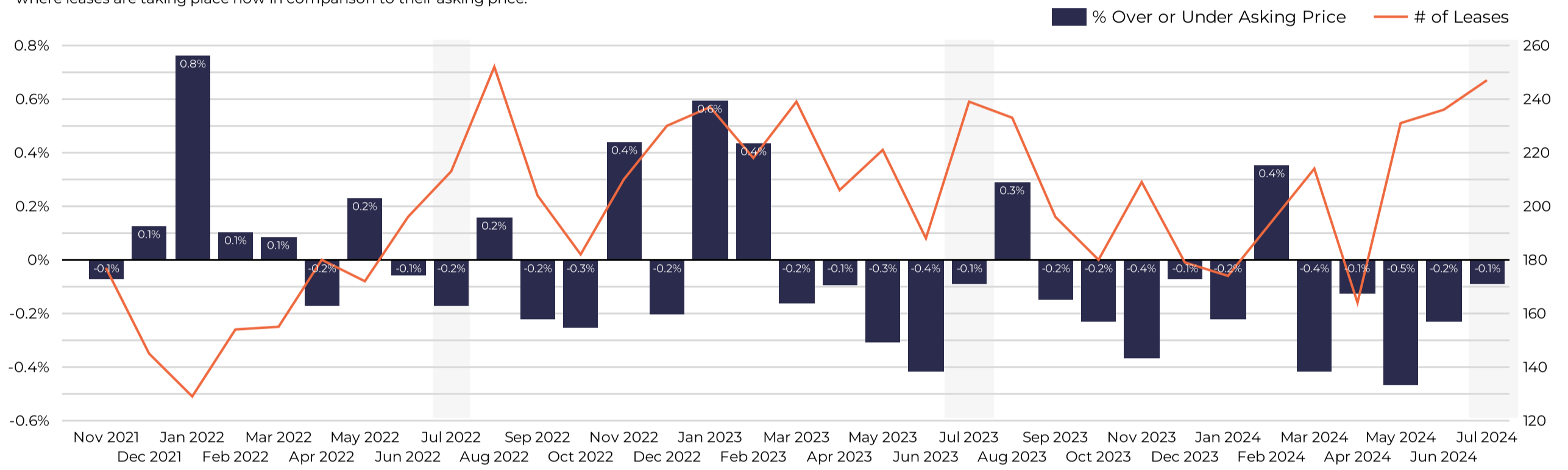
July



# of Leases	247	Median Lease (\$/month)	\$1,895
	↑ 2.9% from previous year		↑ 4.1% from previous year
Total Monthly Rental Volume	\$499,118	Median Days on Market	22
	↑ 8.1% from previous year		↓ -3 from previous year
\$/sqft	\$1.30	Average % Over Asking	-0.09%
	↑ \$0.04 from previous year		↓ 0.37% from previous year

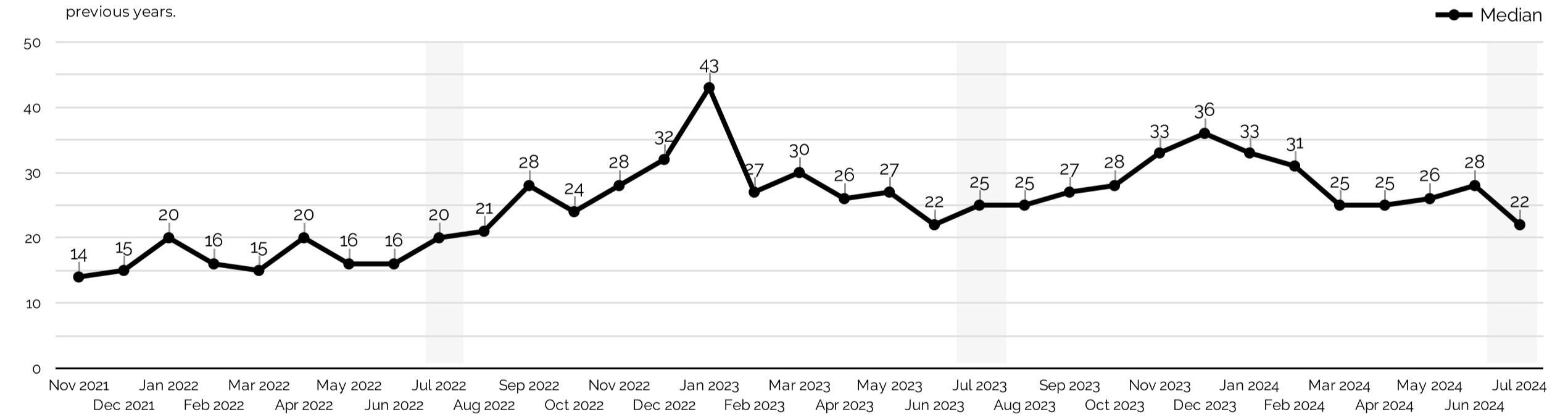
Renter Demand

Explore the seasonality of competitive bidding in this area and understand where leases are taking place now in comparison to their asking price.



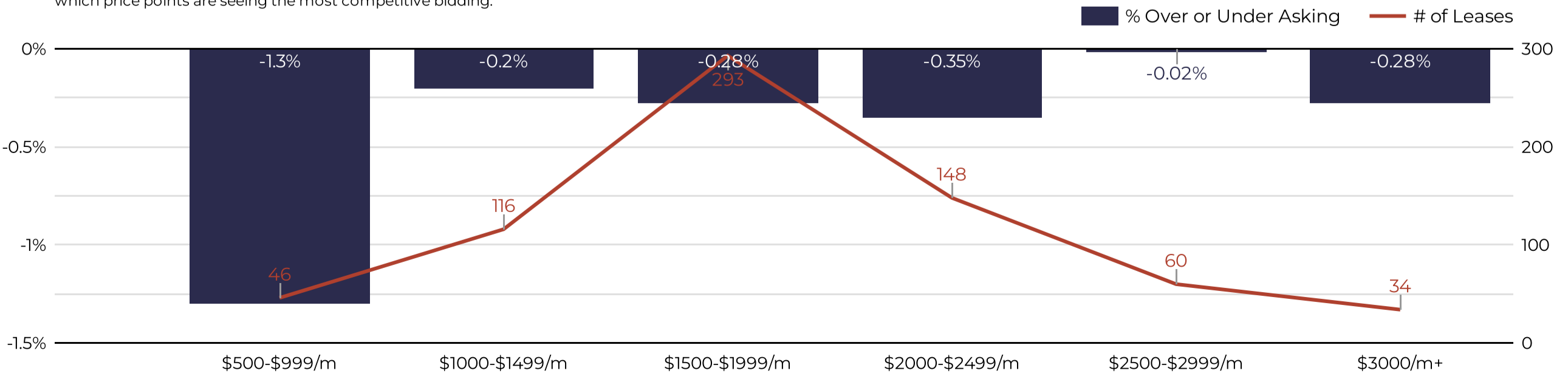
Days on Market

This graphic will help to show how fast listings are leasing vs. in previous years.



Renter Demand at Each Price Range (last 90 days)

Each price range typically attracts competing renters differently. Use this data to see which price points are seeing the most competitive bidding.



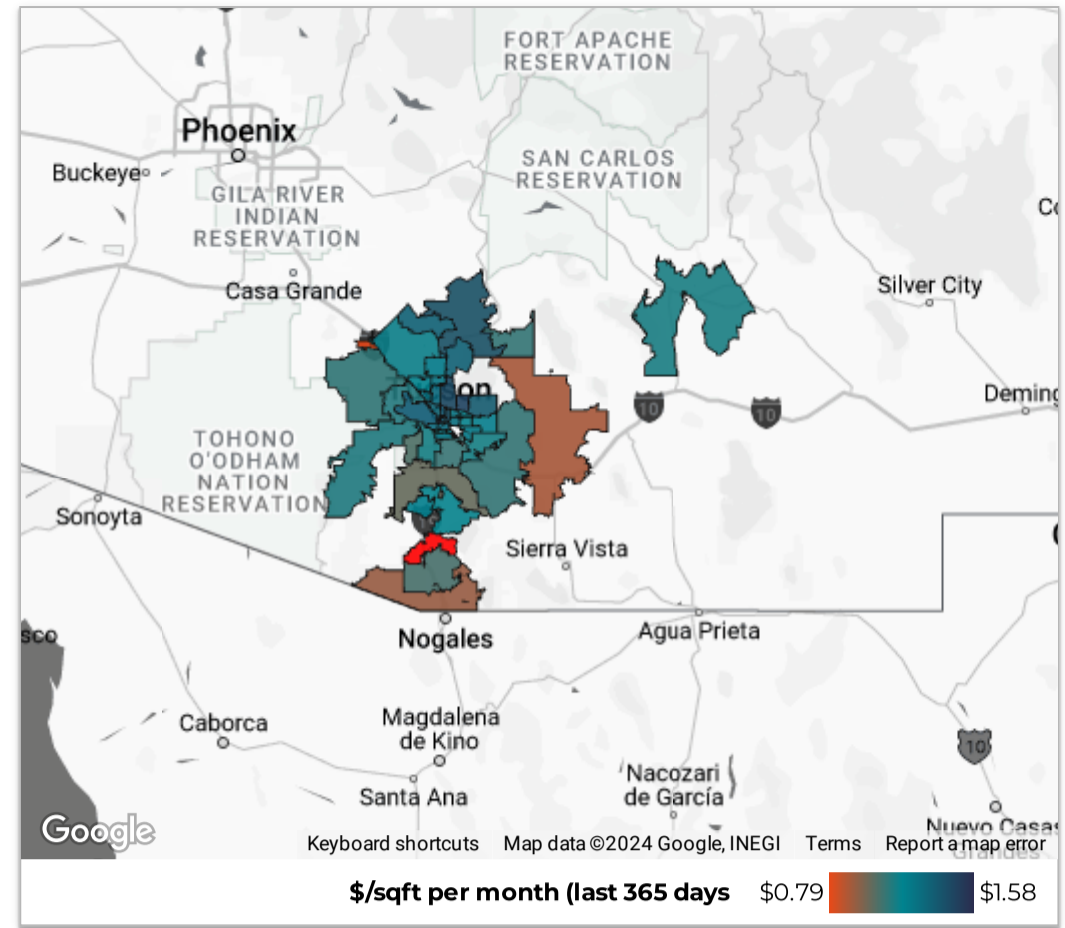
Southern AZ Rental Housing Market

All data is updated in realtime in accordance with content from MLSSAZ. This report provides a snapshot of the market as taken on: Aug 5, 2024

Region City Zip Code

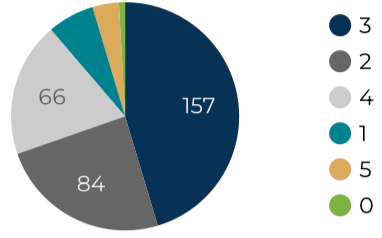
County Type Beds

Price Range Between and



July

of Bedrooms Delivered



of New Listings (Supply)

346

↑ 56 from previous year

of New Pendings (Demand)

94

↓ 11 from previous year

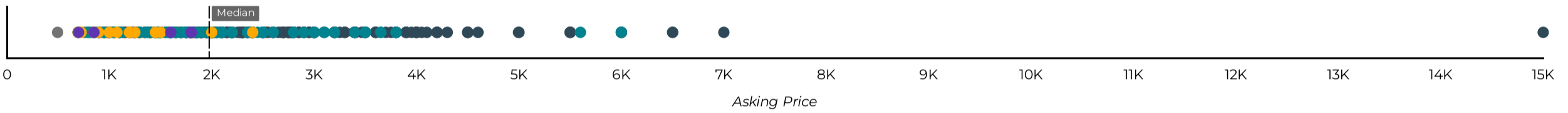
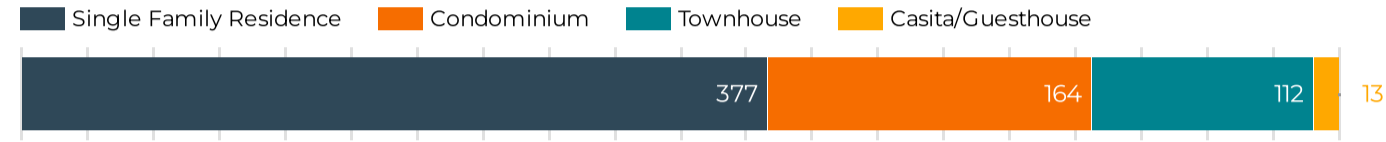
Months of Supply Now

2.72

Active Listings Now

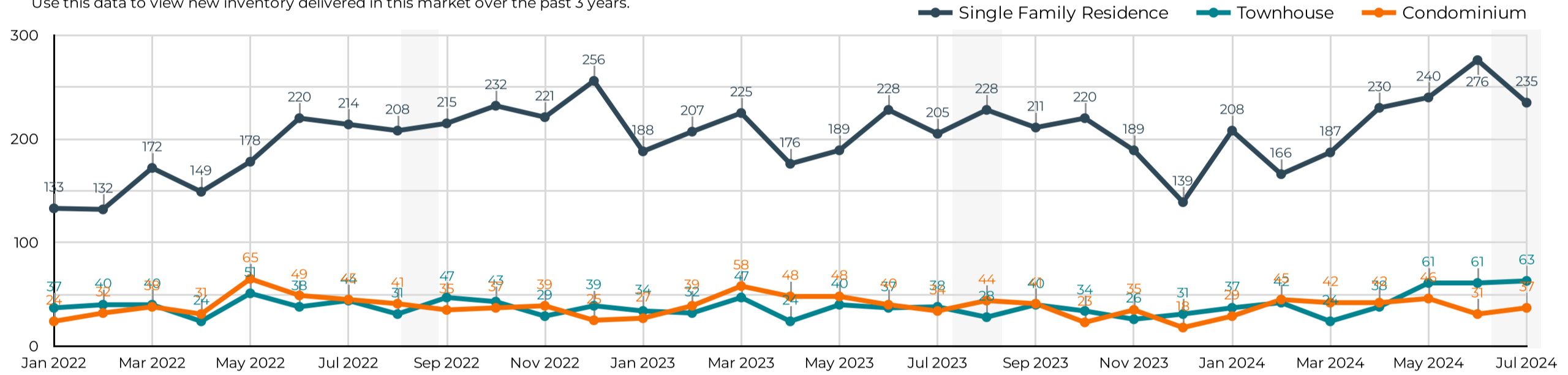
672

Active Now



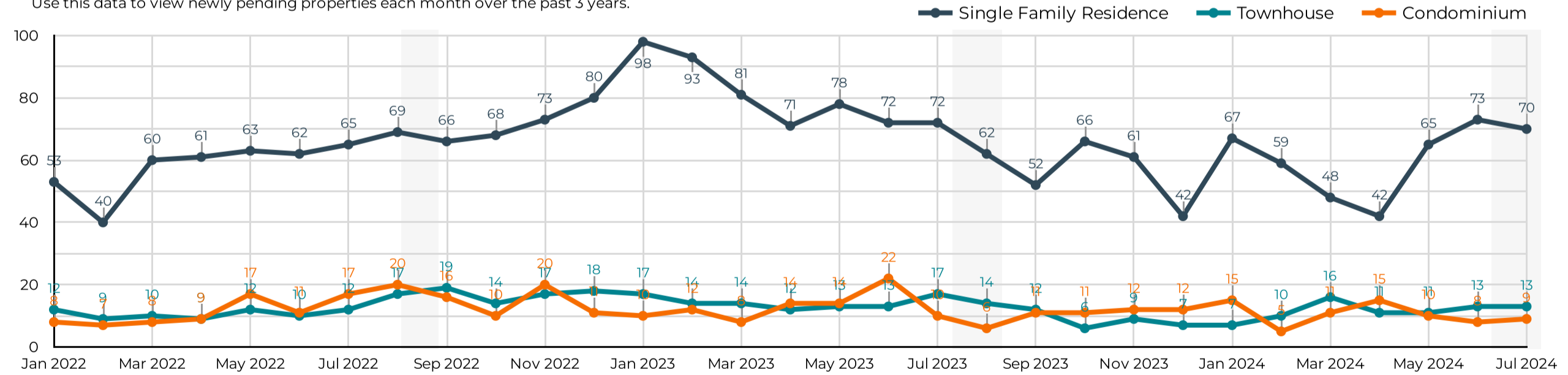
New Rental Listings

Use this data to view new inventory delivered in this market over the past 3 years.



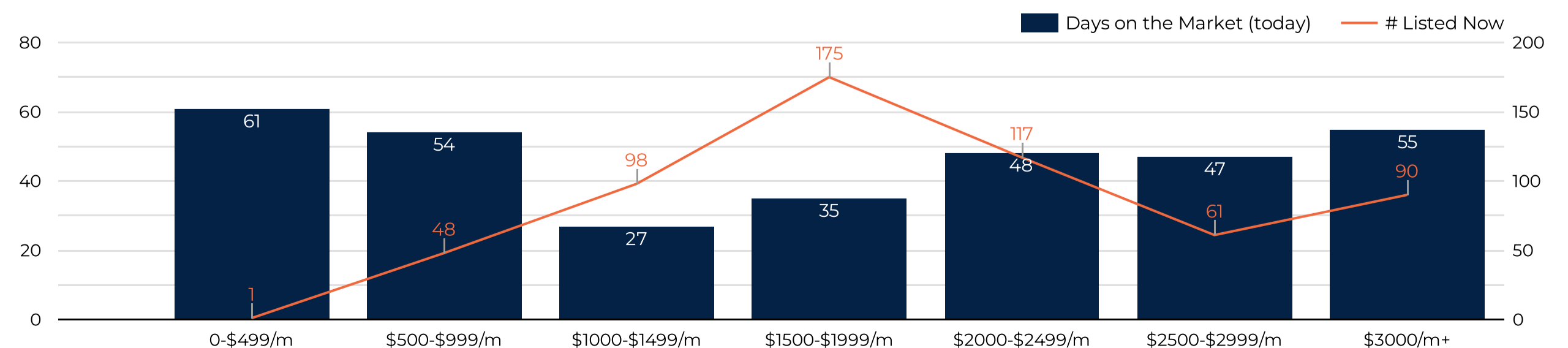
New Pending Leases

Use this data to view newly pending properties each month over the past 3 years.



Active Listings Now

Use this data to see how long current listings are on the market now at each price range.



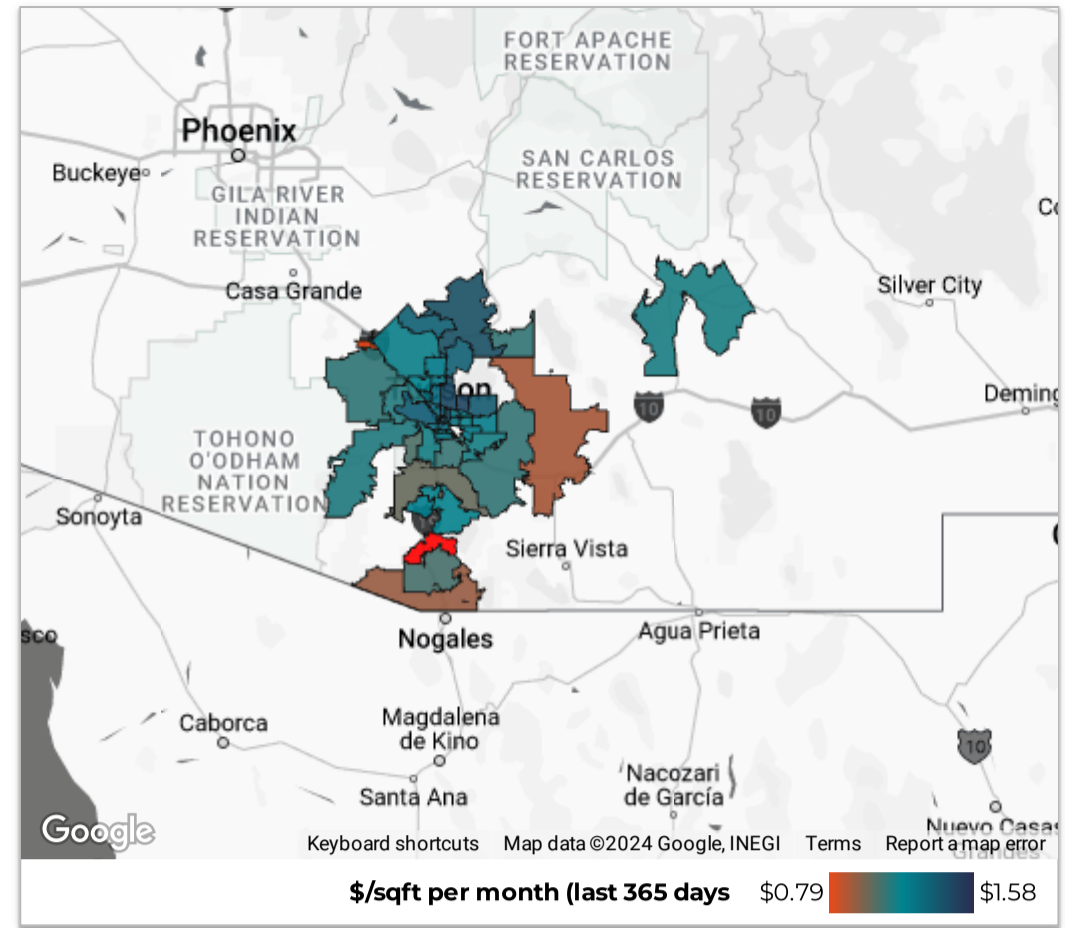
Southern AZ Rental Housing Market

All data is updated in realtime in accordance with content from MLSSAZ.
This report provides a snapshot of the market as taken on: Aug 5, 2024

Region City Zip Code

County Type Beds

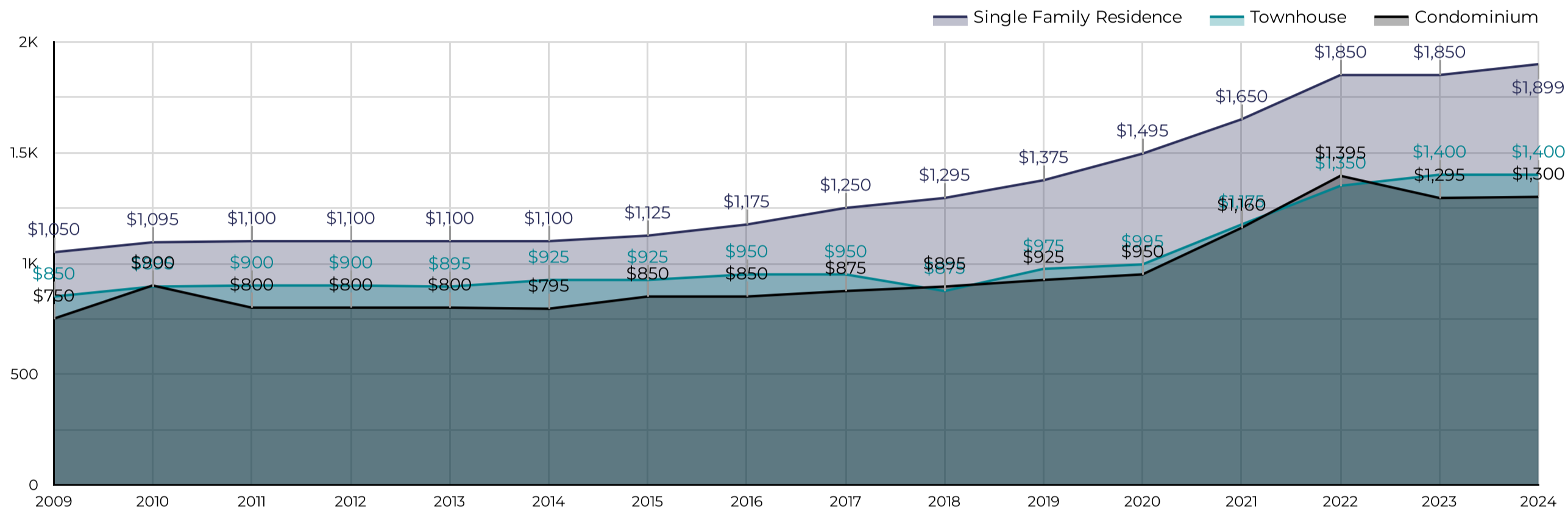
Price Range Between and



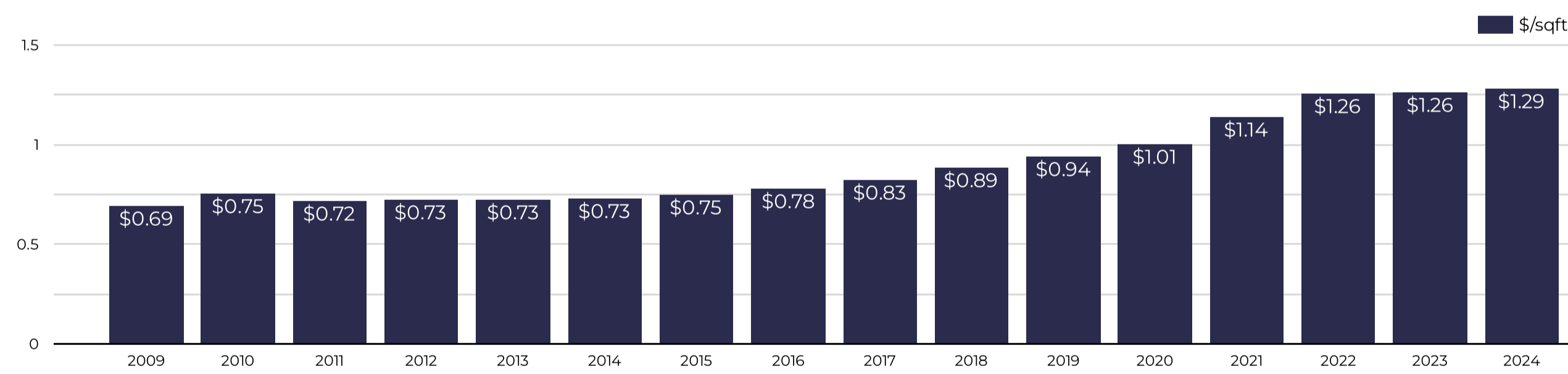
Year-to-Date Statistics 2024

# of Leases 1,528 ↓ -7.4% from Jan 1, 2023 - Aug 6, 2023	Total Monthly Volume \$2.88M ↓ -6.1% from Jan 1, 2023 - Aug 6, 2023	Median Lease (\$/month) \$1,800 ↑ 0.3% from Jan 1, 2023 - Aug 6, 2023
New Listings 2,216 ↑ 5.8% from Jan 1, 2023 - Aug 6, 2023	Median Days on Market 27 ↓ -1 from Jan 1, 2023 - Aug 6, 2023	% Over or Under Asking -0.2% ↓ -0.7% from Jan 1, 2023 - Aug 6, 2023

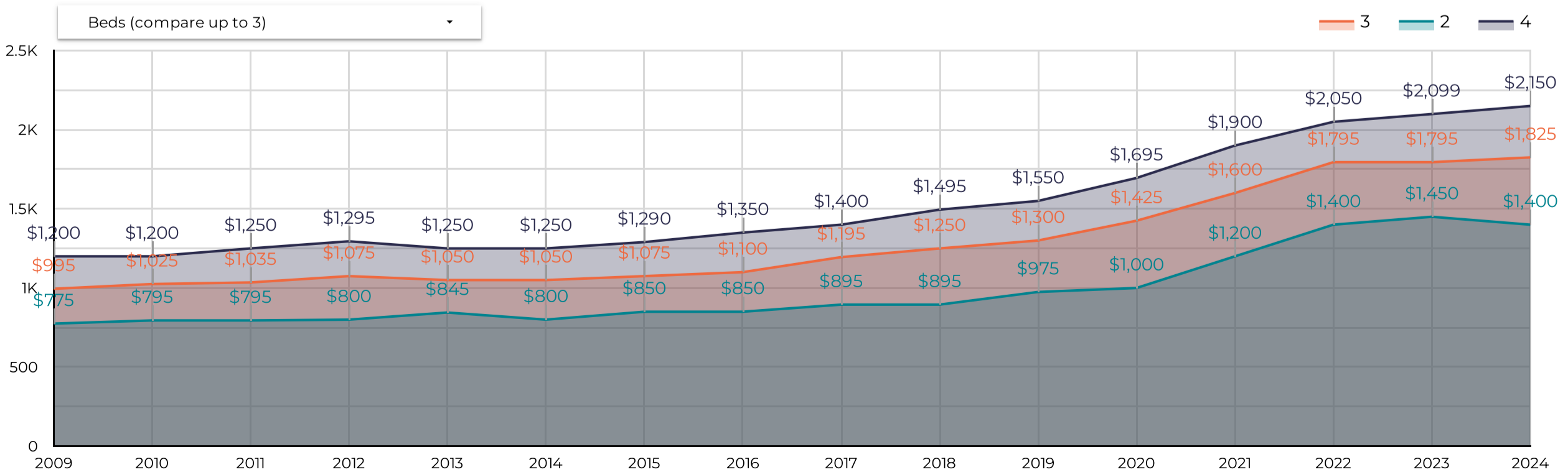
Median Rental Price/Month



\$/Square Foot per Month



Median Lease By Bedrooms



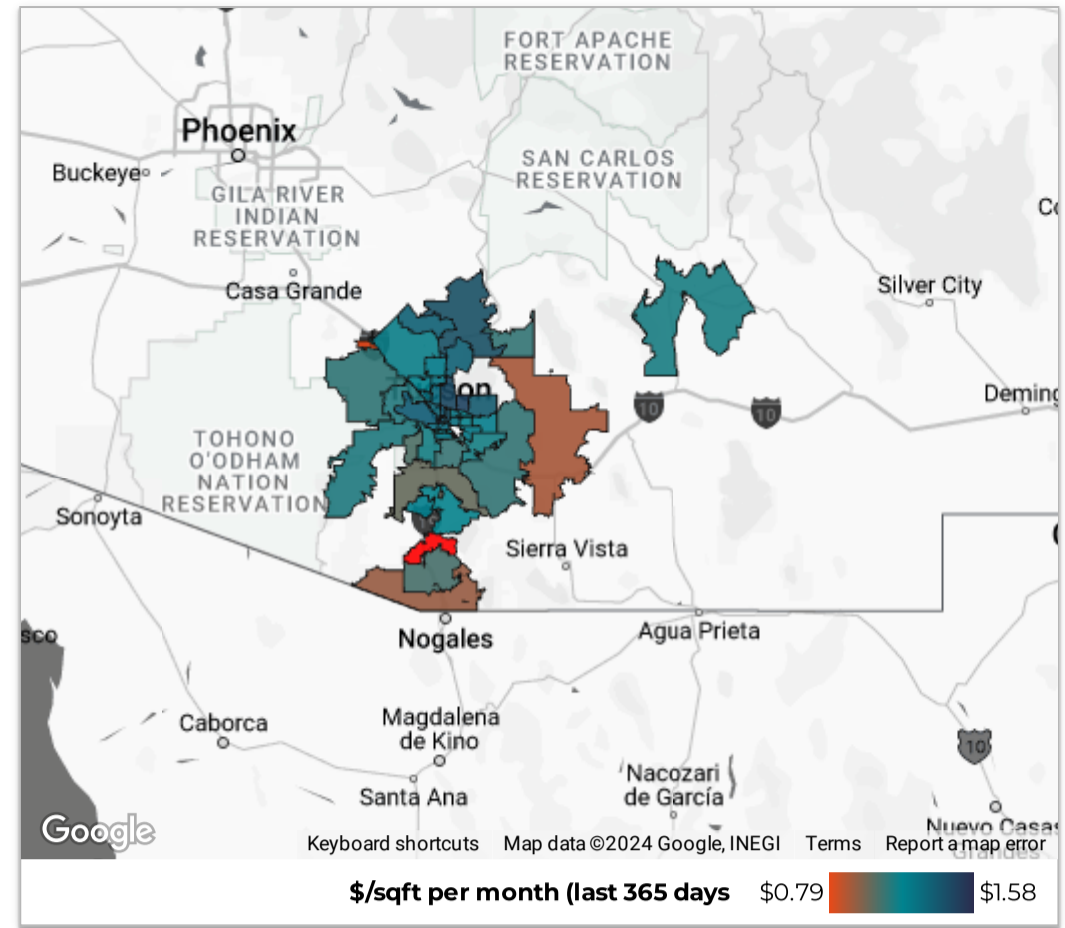
Southern AZ Rental Housing Market

All data is updated in realtime in accordance with content from MLSSAZ.
This report provides a snapshot of the market as taken on: Aug 5, 2024

Region City Zip Code

County Type Beds

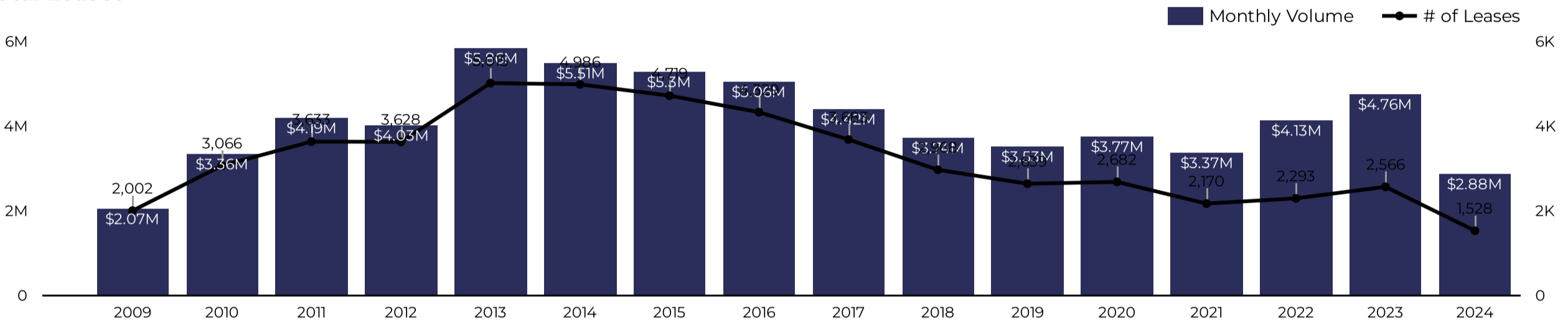
Price Range Between and



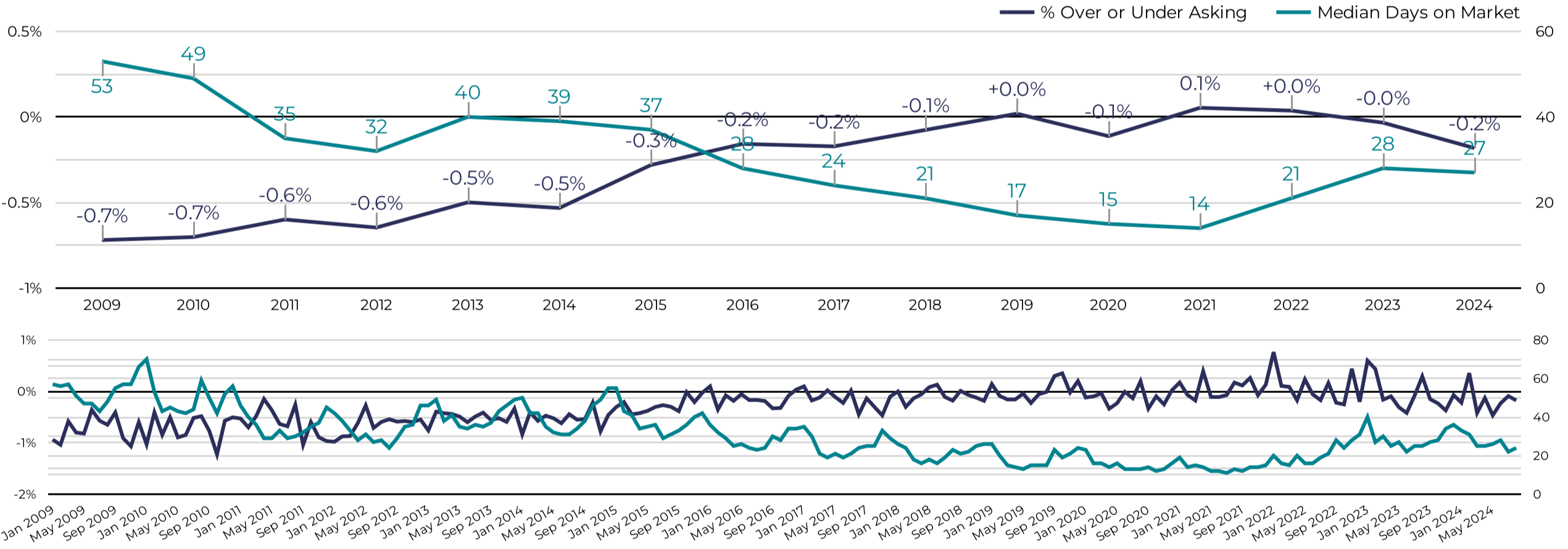
Year-to-Date Statistics 2024

# of Leases 1,528 ↓ -7.4% from Jan 1, 2023 - Aug 6, 2023	Total Volume \$2.88M ↓ -6.1% from Jan 1, 2023 - Aug 6, 2023	Median Lease (\$/month) \$1,800 ↑ 0.3% from Jan 1, 2023 - Aug 6, 2023
New Listings 2,216 ↑ 5.8% from Jan 1, 2023 - Aug 6, 2023	Median Days on Market 27 ↓ -1 from Jan 1, 2023 - Aug 6, 2023	% Over or Under Asking -0.2% ↓ -0.7% from Jan 1, 2023 - Aug 6, 2023

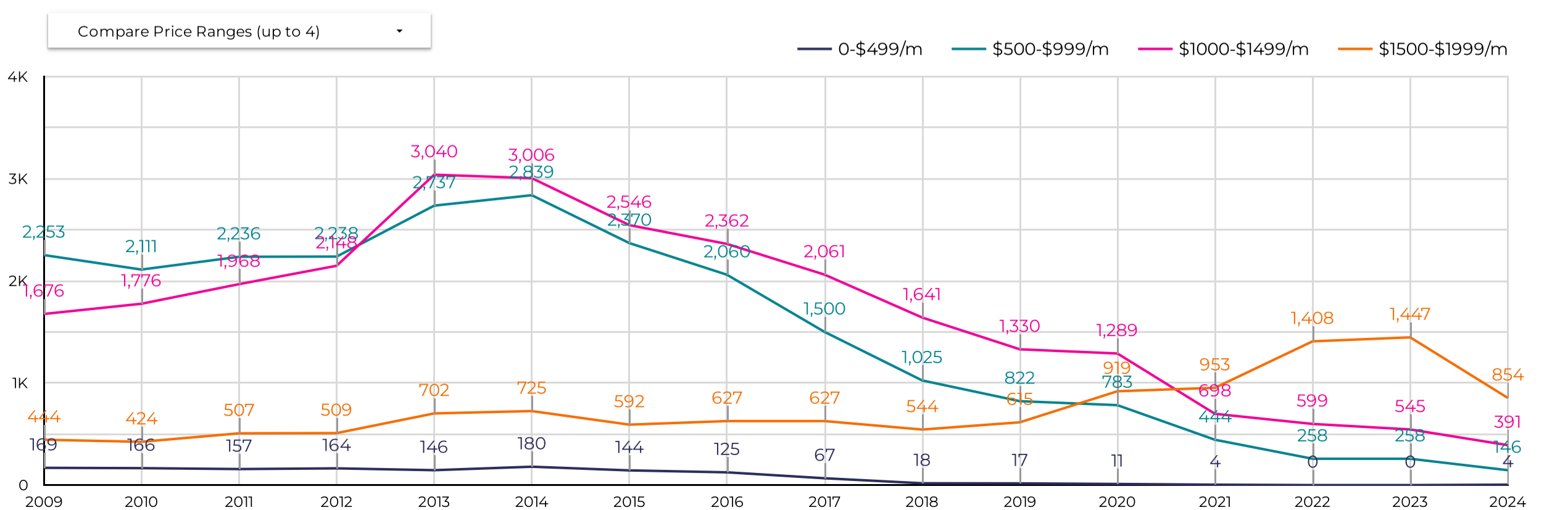
Total Leases



Renter Demand



New Rental Listings Delivered



Southern AZ Rental Housing Market

All data is updated in realtime in accordance with content from MLSSAZ.
This report provides a snapshot of the market as taken on: Aug 5, 2024

Region City Zip Code

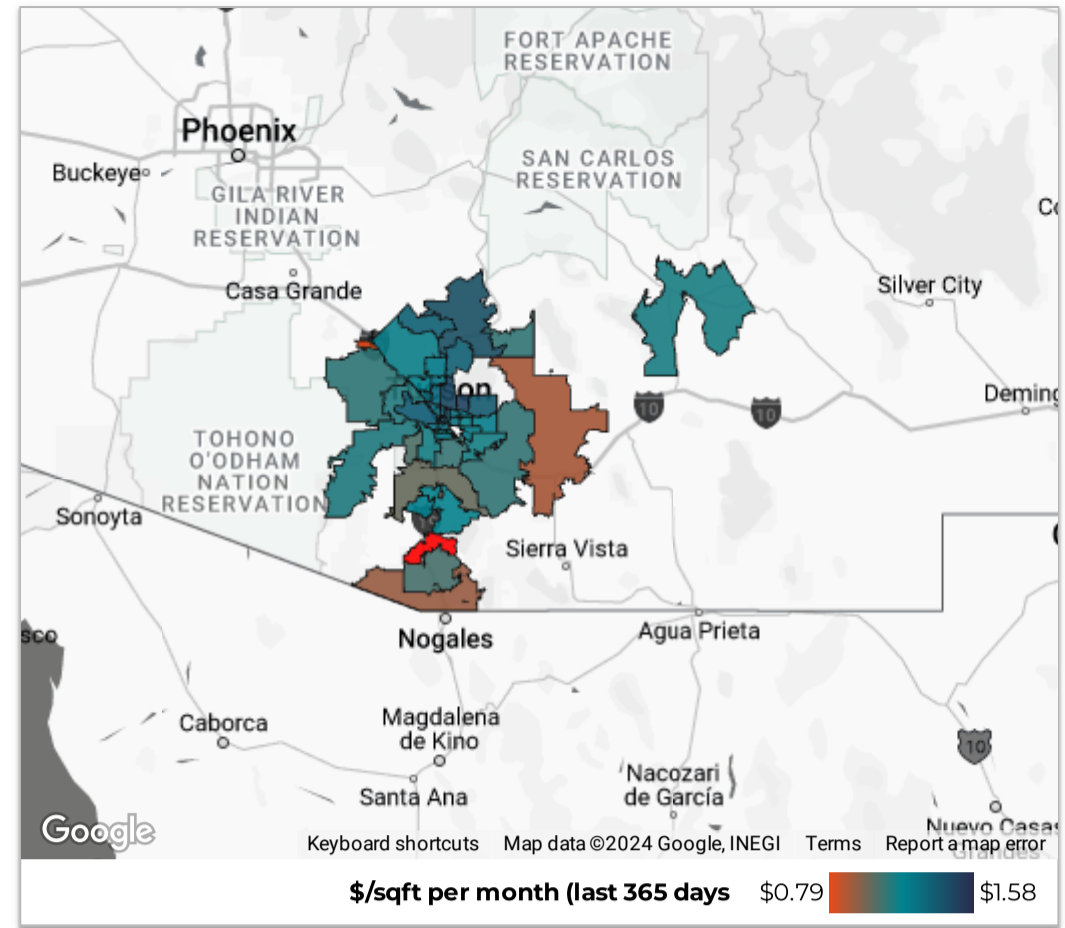
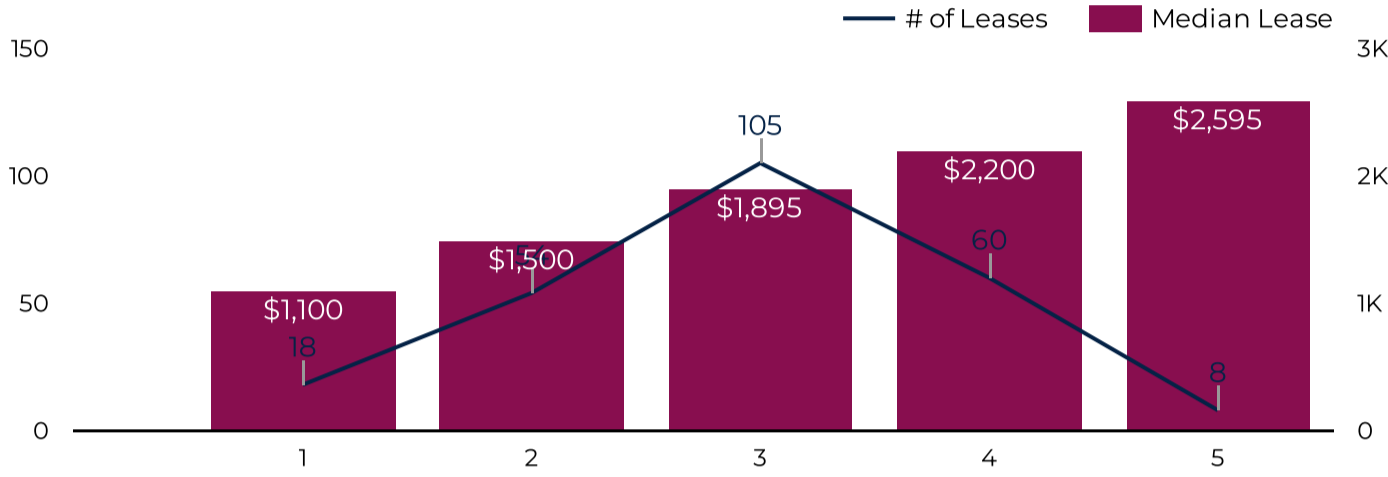
County Type Beds

Price Range Between and

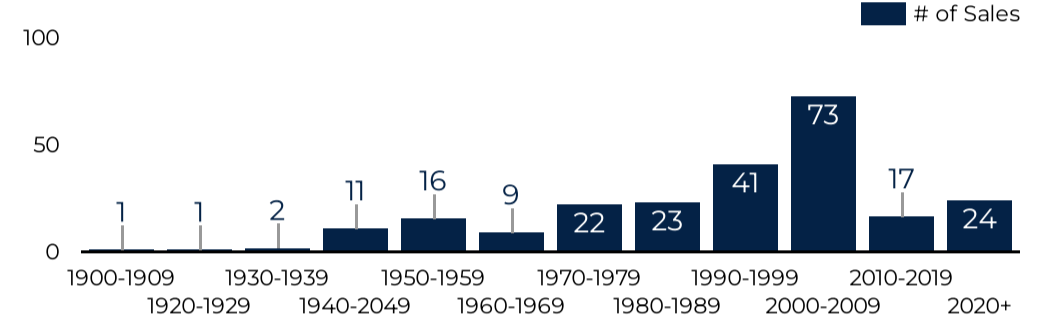
July

of Leases: **247** (↑ 2.9% from previous year)
 Total Monthly Rental Volume: **\$499.12K** (↑ 8.1% from previous year)
 Average SqFt: **1,634**
 Median Year Built: **1,999**

Median Lease Price By Bedrooms



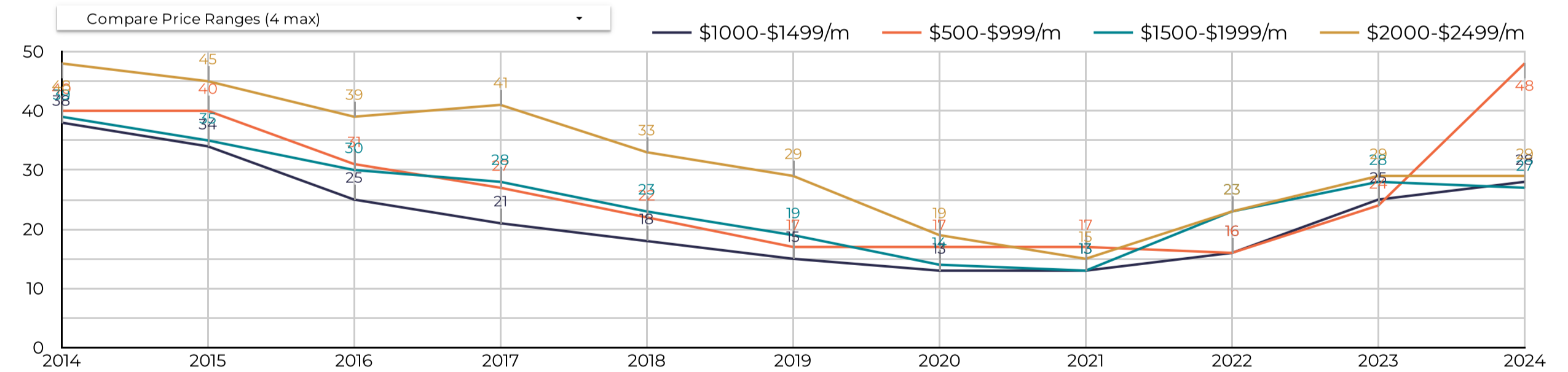
Leases By Property Age



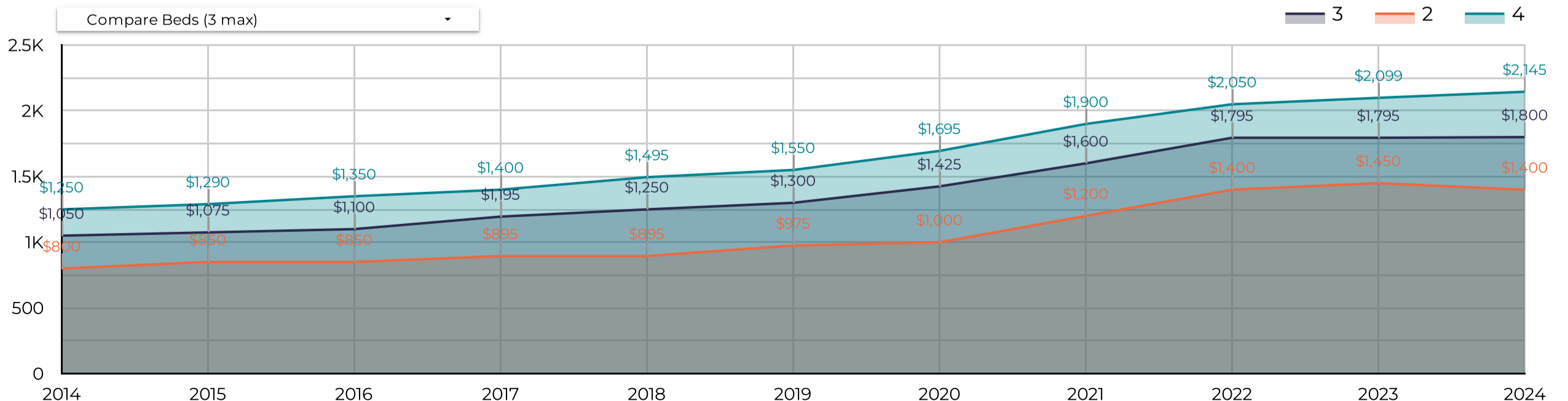
Data By Price Range

Price Range	# of Leases	0-2 Beds	3 Beds	4+ Beds	Median DOM	% Over or Under Asking
\$500-\$999/m	14	14	0	0	29	0%
\$1000-\$1499/m	35	29	6	0	20	0.22%
\$1500-\$1999/m	98	22	63	13	26	-0.26%
\$2000-\$2499/m	52	2	22	28	18	-0.37%
\$2500-\$2999/m	31	7	11	13	34	0.9%
\$3000/m+	17	0	3	14	20	-0.84%
Grand total	247	74	105	68	22	-0.09%

Median Days on Market



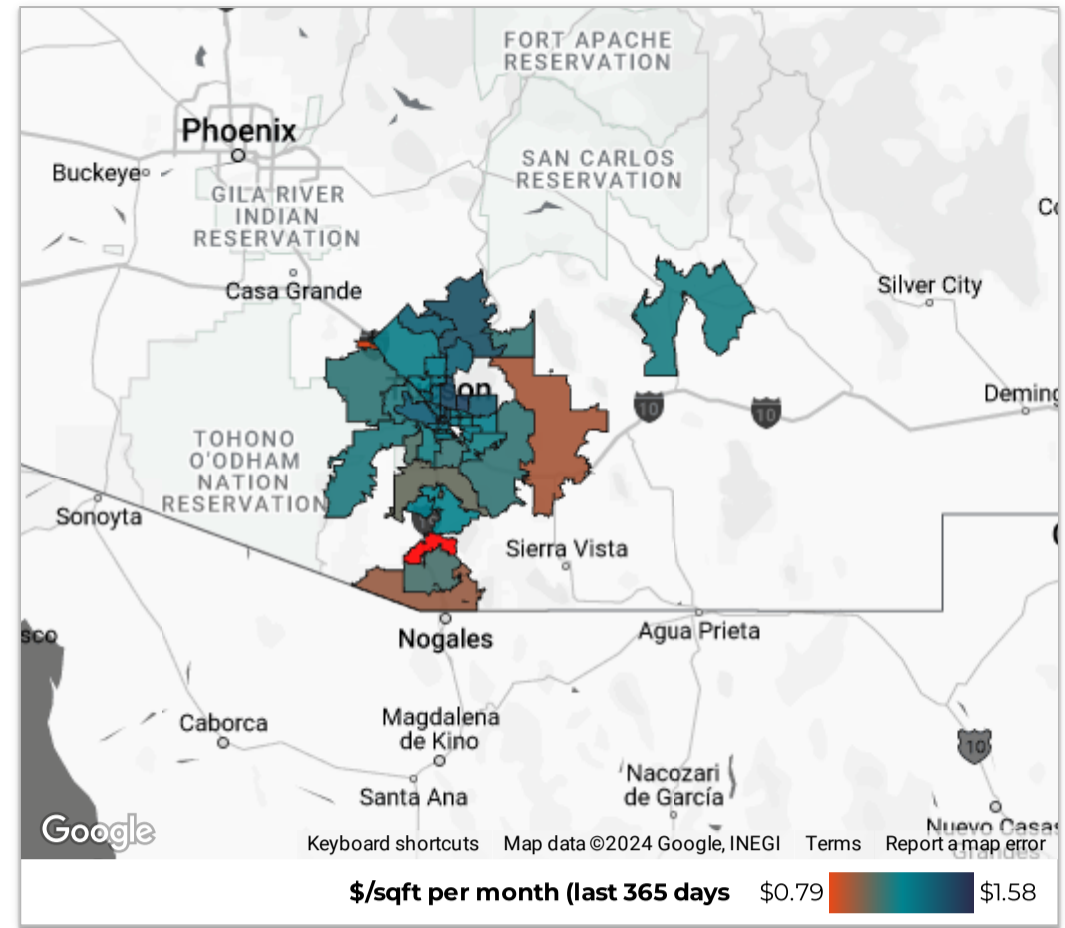
Median Rental Price/Month



Southern AZ Rental Housing Market

All data is updated in realtime in accordance with content from MLSSAZ. This report provides a snapshot of the market as taken on: Aug 5, 2024

Region City Zip Code
 County Type Beds
 Price Range Between Enter a value and Enter a value Download

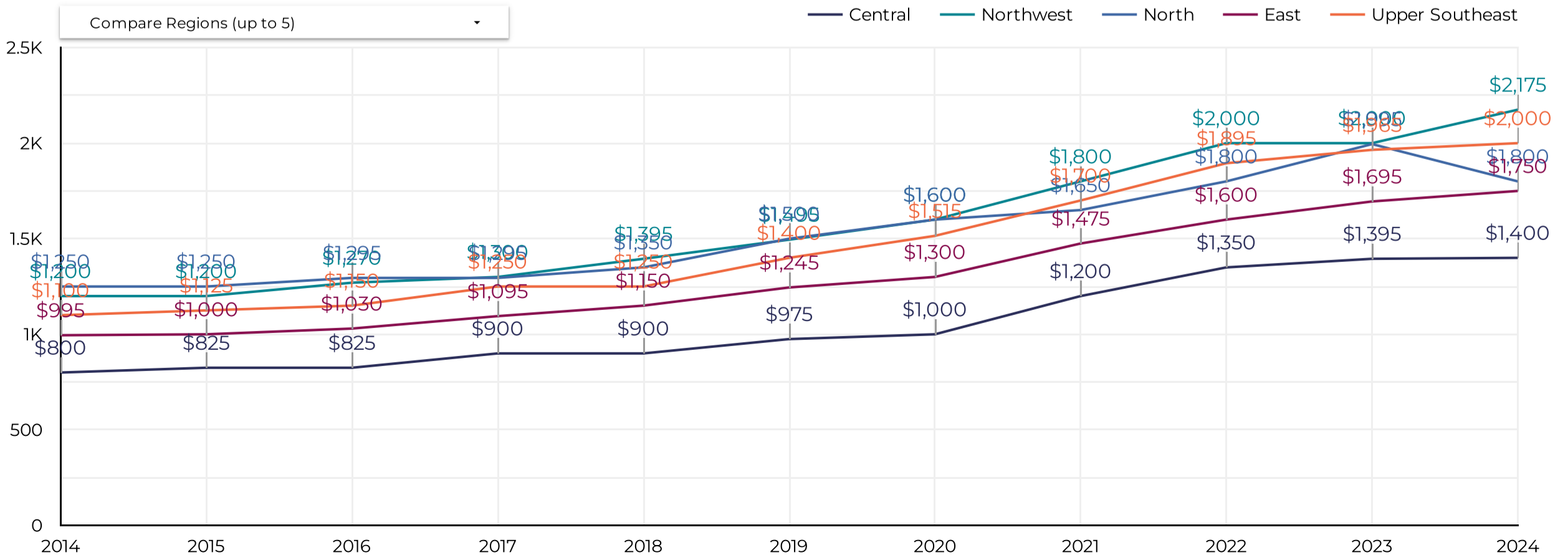


Jul 2024 vs. last year

Use this table to compare MLSSAZ regions year-over-year in your selected area on a range of metrics.

Market Activity				Market Pricing				Renter Demand				
Region	# of Leases	% Δ	Volume	% Δ	Median Lease	Δ	\$/sqft	Δ	Median DOM	Δ	% Over	Δ
1. Central	63	37.0% ↑	\$100.77K	42.1% ↑	\$1,500	-\$50 ↓	\$1.46	\$0.01 ↑	27	7 ↑	1.0%	1.4% ↑
2. Northwest	36	-14.3% ↓	\$94.25K	-0.8% ↓	\$2,200	\$15 ↑	\$1.24	\$0.04 ↑	17	-8 ↓	0.1%	0.8% ↑
3. Upper Southeast	29	11.5% ↑	\$64.12K	9.7% ↑	\$2,195	\$45 ↑	\$1.10	-\$0.10 ↓	37	2 ↑	-0.3%	-1.6% ↓
4. North	28	-15.2% ↓	\$61.45K	-16.5% ↓	\$1,800	-\$50 ↓	\$1.51	\$0.15 ↑	34	2 ↑	-1.5%	-1.3% ↓
5. South	13	62.5% ↑	\$19.36K	43.6% ↑	\$1,695	\$195 ↑	\$1.30	\$0.13 ↑	19	0	0.0%	0.8% ↑
6. West	13	-31.6% ↓	\$26.93K	-26.4% ↓	\$1,995	\$100 ↑	\$1.29	\$0.02 ↑	21	-6 ↓	-0.2%	-0.2% ↓
7. Northeast	12	140.0%...	\$27.32K	172.5% ↑	\$2,200	\$200 ↑	\$1.33	-\$0.13 ↓	34	4 ↑	-0.7%	-0.7% ↓
8. East	11	-31.3% ↓	\$21.58K	-23.8% ↓	\$1,850	\$155 ↑	\$1.26	\$0.05 ↑	30	16 ↑	-0.7%	-0.5% ↓
9. Southwest	8	-46.7%...	\$15.69K	-41.5% ↓	\$1,895	\$200 ↑	\$1.16	-\$0.04 ↓	6	-21 ↓	-0.7%	-1.4% ↓
10. Green Valley North	8	300.0%...	\$15.45K	312.0% ↑	\$1,899	\$249 ↑	\$1.10	\$0.01 ↑	12	-2 ↓	-0.3%	-0.3% ↓
11. Upper Northwest	6	0.0%	\$16.3K	44.3% ↑	\$2,700	\$850 ↑	\$1.39	\$0.21 ↑	19	-2 ↓	0.2%	2.1% ↑
12. Southeast	6	-14.3% ↓	\$11.82K	-14.0% ↓	\$1,895	-\$5 ↓	\$1.05	-\$0.03 ↓	23	-6 ↓	-0.9%	-1.3% ↓
13. Graham	4	-	\$6.6K	-	\$1,700	-	\$1.27	-	2	-	-0.7%	-
14. SCC-Rio Rico East	3	0.0%	\$5.6K	9.8% ↑	\$1,800	\$100 ↑	\$1.13	-\$0.06 ↓	26	-3 ↓	0.0%	0.0%
15. Extended West	3	200.0%...	\$6.7K	179.1% ↑	\$2,250	-\$150 ↓	\$0.96	-\$0.03 ↓	17	-50 ↓	-1.5%	-1.5% ↓
16. Green Valley Nort...	2	-	\$3.25K	-	\$1,400	-	\$1.24	-	14	-	0.0%	-
17. Benson/St. David	2	0.0%	\$1.95K	18.2% ↑	\$850	\$50 ↑	\$0.77	-\$0.12 ↓	29	-26 ↓	0.0%	0.0%

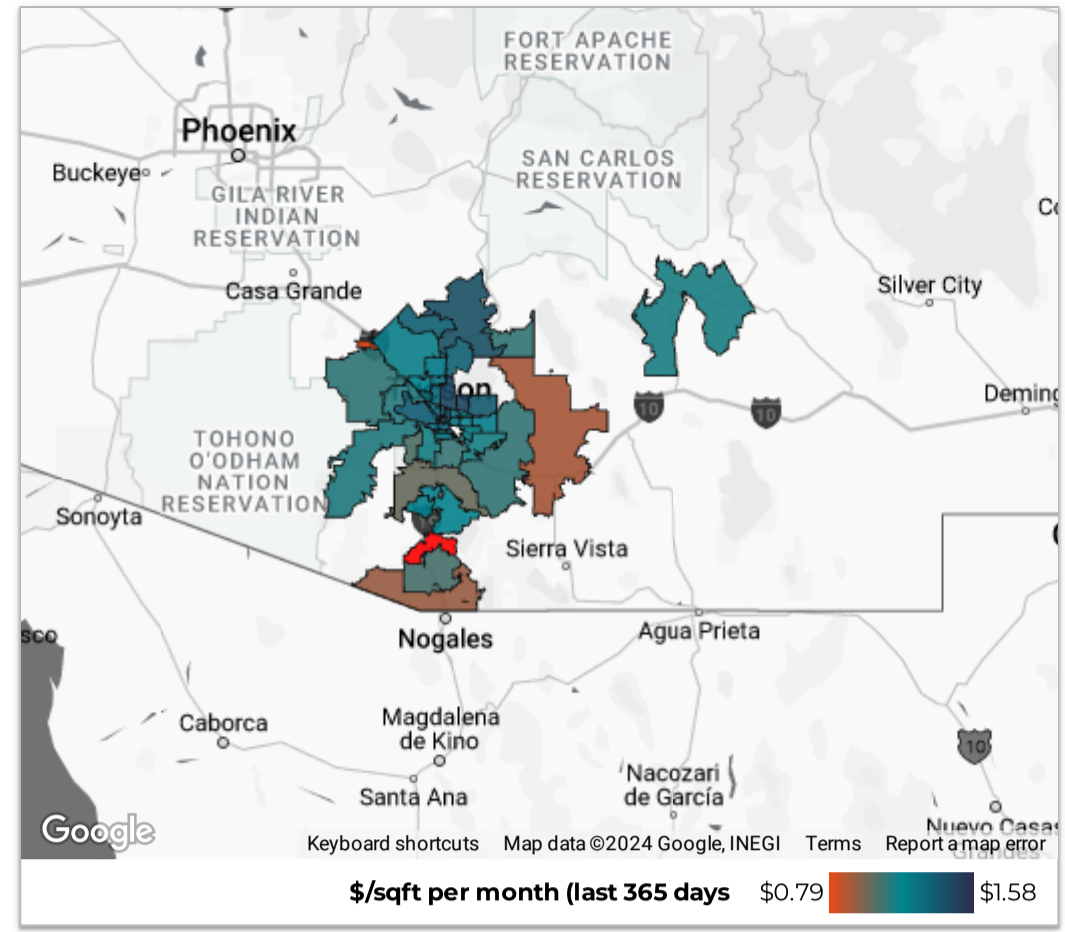
Median Lease by Region



Southern AZ Rental Housing Market

All data is updated in realtime in accordance with content from MLSSAZ. This report provides a snapshot of the market as taken on: Aug 5, 2024

Region City Zip Code
 County Type Beds
 Price Range Between Enter a value and Enter a value Download



Jul 2024 vs. last year

Use this table to compare zip codes year-over-year in your selected area on a range of metrics.

Market Activity				Market Pricing				Renter Demand				
Zip Code	# of Leases	% Δ	Volume	% Δ	Median Lease	Δ	\$/sqft	Δ	Median DOM	Δ	% Over	Δ
1. 85716	19	111.1% ↑	\$29,009	97.7% ↑	\$1,395	\$45 ↑	\$1.58	\$0.13 ↑	29	10 ↑	3.2%	3.8% ↑
2. 85641	14	16.7% ↑	\$29,557	0.0% ↓	\$1,995	-\$355 ↓	\$1.06	\$0.00 ↓	21	-24 ↓	-0.4%	-0.7% ↓
3. 85747	13	-7.1% ↓	\$29,104	1.8% ↑	\$2,045	\$150 ↑	\$1.12	-\$0.22 ↓	39	7 ↑	-0.3%	-2.5% ↓
4. 85711	13	85.7%...	\$19,985	76.6% ↑	\$1,650	-\$25 ↓	\$1.41	\$0.19 ↑	36	13 ↑	0.0%	0.0%
5. 85750	13	-7.1% ↓	\$24,525	-9.0% ↓	\$1,800	\$100 ↑	\$1.57	\$0.12 ↑	66	34 ↑	-1.8%	-1.1% ↓
6. 85719	12	-25.0...	\$17,568	-24.8% ↓	\$1,450	\$155 ↑	\$1.43	-\$0.33 ↓	19	1 ↑	0.2%	0.5% ↑
7. 85718	12	-14.3%...	\$30,928	-18.1% ↓	\$1,800	-\$900 ↓	\$1.50	\$0.14 ↑	15	-23 ↓	-1.1%	-1.4% ↓
8. 85742	10	25.0%...	\$23,900	36.1% ↑	\$2,200	\$50 ↑	\$1.15	-\$0.14 ↓	19	-6 ↓	-0.7%	0.1% ↑
9. 85705	9	50.0%...	\$14,410	98.9% ↑	\$1,650	\$800 ↑	\$1.35	\$0.34 ↑	26	15 ↑	0.0%	0.5% ↑
10. 85629	9	350.0...	\$17,299	361.3% ↑	\$1,899	\$249 ↑	\$1.11	\$0.01 ↑	38	24 ↑	-0.3%	-0.3% ↓
11. 85756	9	-25.0...	\$19,025	-19.3% ↓	\$2,150	\$250 ↑	\$1.11	\$0.04 ↑	23	3 ↑	-0.6%	-0.9% ↓
12. 85715	8	100.0...	\$16,115	132.7% ↑	\$1,895	\$670 ↑	\$1.29	-\$0.15 ↓	27	-3 ↓	0.0%	0.0%
13. 85712	8	0.0%	\$11,299	-20.1% ↓	\$1,275	-\$420 ↓	\$1.39	\$0.19 ↑	13	-6 ↓	0.0%	0.6% ↑
14. 85658	7	0.0%	\$18,285	12.6% ↑	\$2,395	\$95 ↑	\$1.27	\$0.06 ↑	8	-24 ↓	-0.4%	1.4% ↑
15. 85743	7	-12.5%...	\$14,639	-9.4% ↓	\$1,945	\$100 ↑	\$1.19	-\$0.03 ↓	17	-8 ↓	-0.3%	-0.3% ↓
16. 85737	7	-30.0...	\$23,234	-12.9% ↓	\$2,695	\$145 ↑	\$1.27	\$0.13 ↑	19	0	1.7%	1.9% ↑
17. 85755	6	20.0%...	\$16,245	30.1% ↑	\$2,200	-\$395 ↓	\$1.30	\$0.10 ↑	20	-9 ↓	0.0%	0.4% ↑
18. 85745	6	-40.0...	\$12,290	-32.5% ↓	\$1,995	\$200 ↑	\$1.40	\$0.14 ↑	21	-6 ↓	0.0%	0.0%
19. 85704	6	-14.3%...	\$12,939	-10.6% ↓	\$1,995	\$20 ↑	\$1.31	\$0.08 ↑	3	-16 ↓	-0.7%	-0.7% ↓
20. 85706	5	150.0...	\$9,270	204.4%...	\$1,845	\$445 ↑	\$1.05	-\$0.26 ↓	25	6 ↑	0.0%	3.3% ↑
21. 85714	5	400.0...	\$7,448	272.4% ↑	\$1,499	-\$501 ↓	\$1.37	\$0.07 ↑	15	-12 ↓	0.0%	7.0% ↑
22. 85713	4	0.0%	\$4,940	-23.4% ↓	\$895	-\$505 ↓	\$1.43	\$0.09 ↑	12	3 ↑	0.0%	0.0%
23. 85748	4	100.0...	\$9,545	151.5% ↑	\$2,100	\$405 ↑	\$1.20	\$0.03 ↑	7	0	0.0%	0.0%

1 - 38 / 38 < >

Median Lease by Zip Code

